

L'impatiente

PC n° 37

Alain Pierre PRADEL

♩ = 68

Léger



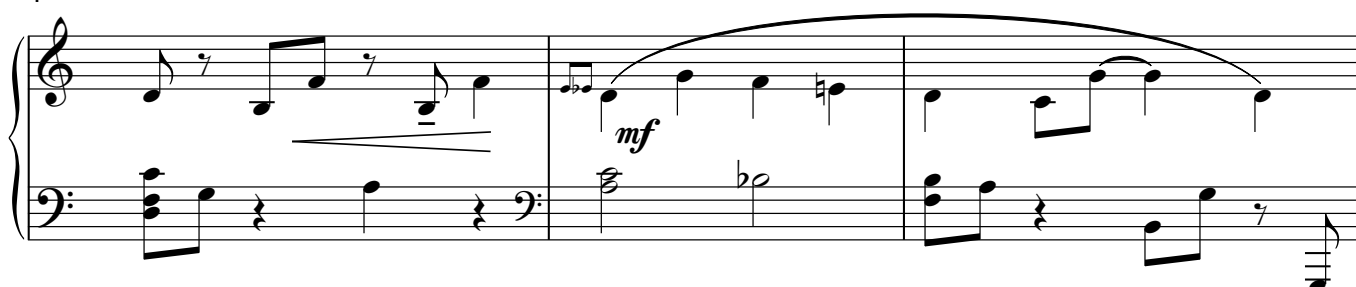
Ped.

*

Ped.

*

4



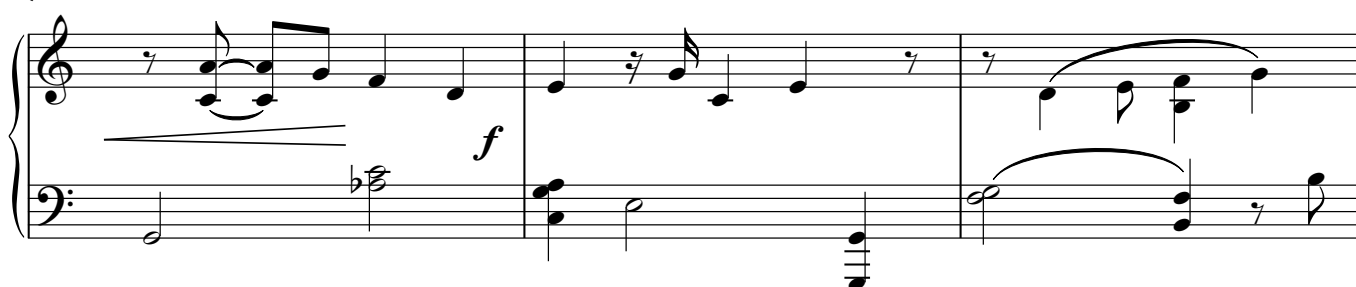
Ped.

*

Ped.

*

7



Ped.

*

Ped.

*

Ped.

*

10



Ped.

*

Ped.

*

Ped.

*

7 Pièces créoles #3

GUADALUPE

2

13

Measures 13-15 of a piano piece. Measure 13 features a half note G4 in the right hand and a whole note F3 in the left hand. Measure 14 has a half note A4 in the right hand and a half note G3 in the left hand. Measure 15 contains a half note B4 in the right hand and a half note F3 in the left hand. A crescendo hairpin is placed over measures 14 and 15. The dynamic *p* (piano) is marked at the start of measure 15. Pedal points are indicated by 'Ped.' and asterisks at the beginning and end of measures 13, 14, and 15.

16

Measures 16-18 of a piano piece. Measure 16 has a whole note G4 in the right hand and a whole note F3 in the left hand. Measure 17 features a half note A4 in the right hand and a half note G3 in the left hand. Measure 18 contains a half note B4 in the right hand and a half note F3 in the left hand. A crescendo hairpin is placed over measures 17 and 18. The dynamic *mf* (mezzo-forte) is marked at the start of measure 17. Pedal points are indicated by 'Ped.' and asterisks at the beginning and end of measures 16, 17, and 18.

19

Measures 19-21 of a piano piece. Measure 19 features a half note A4 in the right hand and a half note G3 in the left hand. Measure 20 has a half note B4 in the right hand and a half note F3 in the left hand. Measure 21 contains a half note C5 in the right hand and a half note G3 in the left hand. A crescendo hairpin is placed over measures 19 and 20. Pedal points are indicated by 'Ped.' and asterisks at the beginning and end of measures 19, 20, and 21.

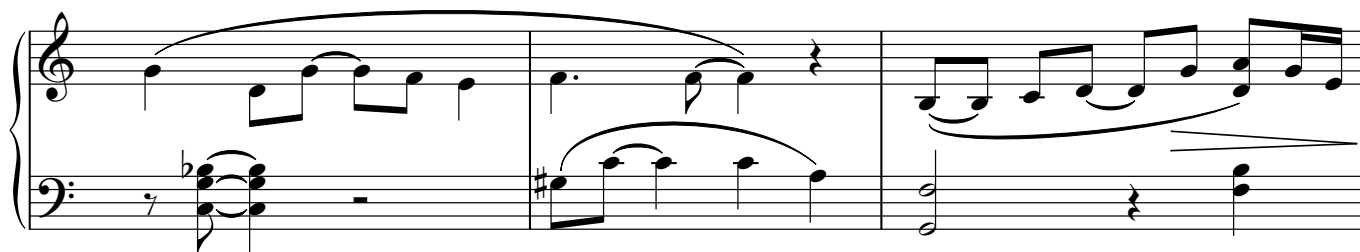
22

Measures 22-24 of a piano piece. Measure 22 features a half note A4 in the right hand and a half note G3 in the left hand. Measure 23 has a half note B4 in the right hand and a half note F3 in the left hand. Measure 24 contains a half note C5 in the right hand and a half note G3 in the left hand. A crescendo hairpin is placed over measures 22 and 23. Pedal points are indicated by 'Ped.' and asterisks at the beginning and end of measures 22, 23, and 24.

25

Measures 25-28 of a piano piece. Measure 25 features a half note A4 in the right hand and a half note G3 in the left hand. Measure 26 has a half note B4 in the right hand and a half note F3 in the left hand. Measure 27 contains a half note C5 in the right hand and a half note G3 in the left hand. Measure 28 features a half note D5 in the right hand and a half note G3 in the left hand. A crescendo hairpin is placed over measures 25 and 26. Pedal points are indicated by 'Ped.' and asterisks at the beginning and end of measures 25, 26, 27, and 28.

29



Ped.

*

Ped.

*

Ped.

*

32



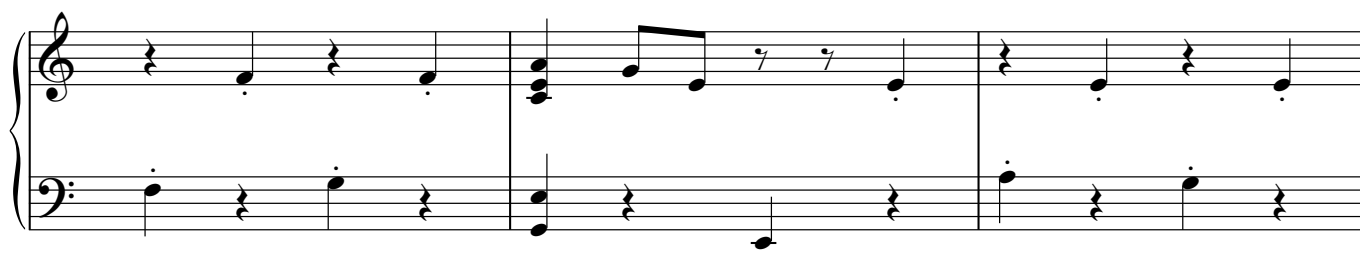
Ped.

*

Ped.

*

35



Ped.

*

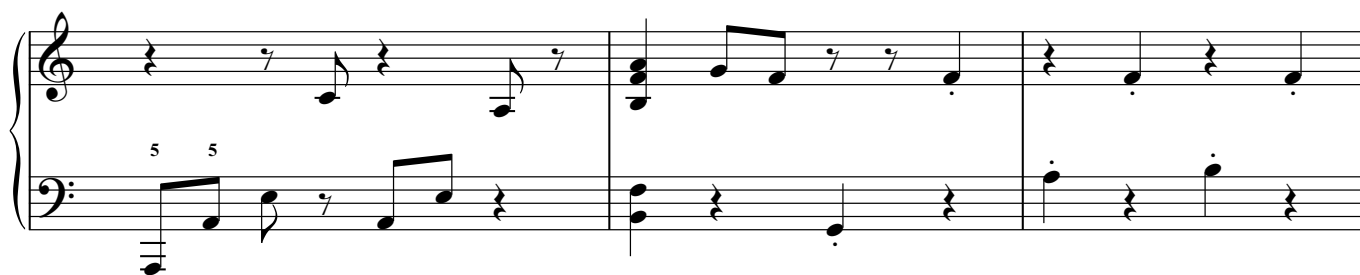
Ped.

*

38



41



Ped.

*

4
44

Red. *

47

3

48

8va---|

50

Red. *

51

8vb *

53 *8va*-----| *rit*-----*tempo*

p

Ped.

*

Ped.

*

56

mf

Ped.

*

Ped.

*

59

f

Ped.

*

Ped.

*

Ped.

*

Ped.

*

63

mf

Ped.

*

Ped.

*

Ped.

*

66

p *rit*-----

Ped.

*

Ped.